

# INGRANAGGI A DENTI ELICOIDALI

## HELICAL GEARS

# INDICE SERIE

## SERIES INDEX

SERIE SERIES	QUALITÀ QUALITY	MATERIALE MATERIAL	TRATTAMENTO TERMICO HEAT-TREATMENT	HRC	SUPERFICIE SURFACE	MOZZO HUB	MODULI DISPONIBILI MODULES	PAG PAGE
<b>300</b>	5e24	20MnCr5	cementazione case-hardening	60	rettificata ground	corto short	1,5_2_2,5_3_3,183_4_5_6_8_10	<b>82</b>
<b>305</b>	5e24	C45	denti temprati ad induzione induction-hardened teeth	55-58	rettificata ground	corto short	1,5_2_2,5_3_3,183_4_5_6_8_10	<b>83</b>
<b>310</b>	5e24	20MnCr5	cementazione case-hardening	60	rettificata ground	lungo long	1,5_2_2,5_3_3,183_4_5_6_8_10	<b>84</b>
<b>315</b>	5e24	C45	denti temprati ad induzione induction-hardened teeth	55-58	rettificata ground	lungo long	1,5_2_2,5_3_3,183_4_5_6_8_10	<b>85</b>
<b>320</b>	6e24	20MnCr5	cementazione case-hardening	60	rettificata ground	corto short	1,5_2_2,5_3_3,183_4_5_6_8_10	<b>86</b>
<b>325</b>	6e24	C45	denti temprati ad induzione induction-hardened teeth	55-58	rettificata ground	corto short	1,5_2_2,5_3_3,183_4_5_6_8_10	<b>87</b>
<b>330</b>	6e24	20MnCr5	cementazione case-hardening	60	rettificata ground	lungo long	1,5_2_2,5_3_3,183_4_5_6_8_10	<b>88</b>
<b>335</b>	6e24	C45	denti temprati ad induzione induction-hardened teeth	55-58	rettificata ground	lungo long	1,5_2_2,5_3_3,183_4_5_6_8_10	<b>89</b>
<b>340</b>	7e25	20MnCr5	cementazione case-hardening	60	rettificata ground	corto short	1,5_2_2,5_3_3,183_4_5_6_8_10	<b>90</b>
<b>345</b>	7e25	C45	denti temprati ad induzione induction-hardened teeth	55-58	rettificata ground	corto short	1,5_2_2,5_3_3,183_4_5_6_8_10	<b>91</b>
<b>350</b>	7e25	20MnCr5	cementazione case-hardening	60	rettificata ground	lungo long	1,5_2_2,5_3_3,183_4_5_6_8_10	<b>92</b>
<b>355</b>	7e25	C45	denti temprati ad induzione induction-hardened teeth	55-58	rettificata ground	lungo long	1,5_2_2,5_3_3,183_4_5_6_8_10	<b>93</b>
<b>360</b>	9e25	C45	non incluso not included	-	finitura di utensile milled teeth	corto short	1,5_2_2,5_3_3,183_4_5_6_8_10	<b>94</b>
<b>365</b>	9e25	C45	non incluso not included	-	finitura di utensile milled teeth	lungo long	1,5_2_2,5_3_3,183_4_5_6_8_10	<b>95</b>
<b>370</b>	10e25	C45	denti temprati ad induzione induction-hardened teeth	55-58	finitura di utensile, foro interno rettificato milled teeth, ground internal hole	corto short	1,5_2_2,5_3_3,183_4_5_6_8_10	<b>96</b>
<b>375</b>	10e25	C45	denti temprati ad induzione induction-hardened teeth	55-58	finitura di utensile, foro interno rettificato milled teeth, ground internal hole	lungo long	1,5_2_2,5_3_3,183_4_5_6_8_10	<b>97</b>



# Dentatura Elicoidale SERIE 300

## Helical tooth system SERIES 300

# Q5 - 20MnCr5

## Mozzo Corto Short Hub

Qualità - Quality: **5e24**

Materiale - Material: **20MnCr5**

Denti elicoidali: **19° 31' 42" sx**

Helical tooth system: 19° 31' 42" left-hand

Angolo di pressione - Pressure angle: **20°**

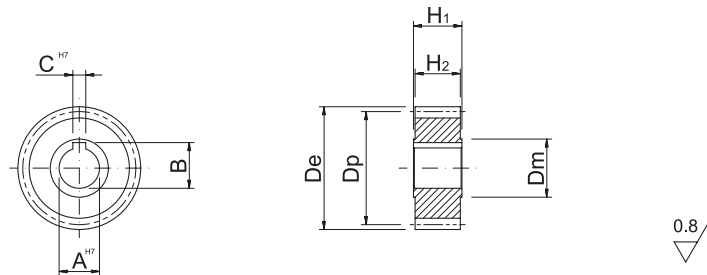
Superficie: rettificata - Surface: ground

Trattamento termico: cementazione 60 HRC

Heat-treatment: case-hardening 60 HRC

**R= 1200 N/mm<sup>2</sup> (resistenza carico a rottura)**

R= 1200 N/mm<sup>2</sup> (tensile strength)



In caso di prodotti personalizzati a disegno, invia la tua richiesta a - In case you need customized products, please send your request to: [info@gambinimeccanica.it](mailto:info@gambinimeccanica.it)

CODICE ITEM CODE	M	Z	De	Dp	CH7	B	AH7	H2	H1	Dmh8
1HG35L015016S	1,5	16	28,465	25,465	4	11,5	10	28	30	20
1HG35L015018S	1,5	18	31,648	28,648	5	17,3	15	28	30	22
1HG35L015020S	1,5	20	34,831	31,831	5	17,3	15	28	30	25
1HG35L015024S	1,5	24	41,197	38,197	6	22,8	20	28	30	32
1HG35L015030S	1,5	30	50,747	47,747	8	28,3	25	28	30	40
1HG35L015040S	1,5	40	66,662	63,662	12	43,3	40	28	30	58
1HG35L020016S	2	16	37,953	33,953	5	17,3	15	28	30	25
1HG35L020018S	2	18	42,197	38,197	5	17,3	15	28	30	30
1HG35L020020S	2	20	46,441	42,441	6	22,8	20	28	30	30
1HG35L020022S	2	22	50,686	46,686	8	28,3	25	28	30	36
1HG35L020024S	2	24	54,93	50,93	8	28,3	25	28	30	36
1HG35L020030S	2	30	67,662	63,662	8	28,3	25	28	30	36
1HG35L020040S	2	40	88,883	84,883	12	43,3	40	28	30	62
1HG35L025024S	2,5	24	68,662	63,662	8	28,3	25	28	30	36
1HG35L030020S	3	20	69,662	63,662	6	22,8	20	28	30	30
1HG35L030022S	3	22	76,028	70,028	8	28,3	25	28	30	36
1HG35L030024S	3	24	82,394	76,394	8	28,3	25	28	30	36
1HG35L030040S	3	40	133,324	127,324	12	43,3	40	28	30	62
1HG35L031020S	3,183	20	73,914	67,548	6	22,8	20	28	30	30
1HG35L031022S	3,183	22	80,668	74,302	8	29,3	25	28	30	36
1HG35L031024S	3,183	24	87,423	81,057	8	28,3	25	28	30	36
1HG35L031030S	3,183	30	107,687	101,321	8	28,3	25	28	30	36
1HG35L040020S	4	20	92,883	84,883	10	38,3	35	40	50	55
1HG35L040025S	4	25	114,103	106,103	10	38,3	35	40	50	55
1HG35L040030S	4	30	135,324	127,324	10	38,3	35	40	50	55
1HG35L040032S	4	32	143,812	135,812	10	38,3	35	40	50	55
1HG35L050020S	5	20	116,103	106,103	14	48,8	45	50	60	68
1HG35L050024S	5	24	137,324	127,324	14	48,8	45	50	60	68
1HG35L050025S	5	25	142,629	132,629	14	48,8	45	50	60	68
1HG35L050030S	5	30	169,155	159,155	14	48,8	45	50	60	68
1HG35L060020S	6	20	139,324	127,324	16	59,3	55	60	70	80
1HG35L060021S	6	21	145,69	133,69	16	59,3	55	60	70	80
1HG35L060024S	6	24	164,789	152,789	16	59,3	55	60	70	80
1HG35L060025S	6	25	171,155	159,155	16	59,3	55	60	70	80
1HG35L060030S	6	30	202,986	190,986	16	59,3	55	60	70	80
1HG35L080020S	8	20	185,766	169,766	20	79,9	75	80	100	110
1HG35L100020S	10	20	232,207	212,207	22	90,4	85	100	120	125

# Dentatura Elicoidale SERIE 305

## Helical tooth system SERIES 305

# Q5 - C45

## Mozzo Corto Short Hub

**Qualità - Quality:** 5e24

**Materiale - Material:** C45

**Denti elicoidali: 19° 31' 42" sx**

Helical tooth system: 19° 31' 42" left-hand

**Angolo di pressione - Pressure angle:** 20°

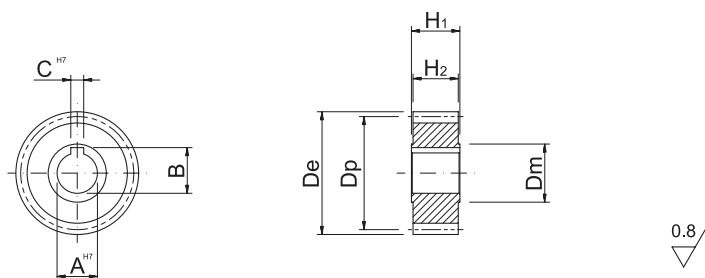
**Superficie: rettificata - Surface:** ground

**Trattamento termico: denti temprati ad induzione 55-58 HRC**

Heat-treatment: induction-hardened teeth 55-58 HRC

**R= 700 N/mm<sup>2</sup> (resistenza carico a rottura)**

R= 700 N/mm<sup>2</sup> (tensile strength)



In caso di prodotti personalizzati a disegno, invia la tua richiesta a - In case you need customized products, please send your request to: [info@gambinimeccanica.it](mailto:info@gambinimeccanica.it)

CODICE ITEM CODE	M	Z	De	Dp	CH7	B	AH7	H2	H1	Dmh8
1HG15L015016S	1,5	16	28,465	25,465	4	11,5	10	28	30	20
1HG15L015018S	1,5	18	31,648	28,648	5	17,3	15	28	30	22
1HG15L015020S	1,5	20	34,831	31,831	5	17,3	15	28	30	25
1HG15L015024S	1,5	24	41,197	38,197	6	22,8	20	28	30	32
1HG15L015030S	1,5	30	50,747	47,747	8	28,3	25	28	30	40
1HG15L015040S	1,5	40	66,662	63,662	12	43,3	40	28	30	58
1HG15L020016S	2	16	37,953	33,953	5	17,3	15	28	30	25
1HG15L020018S	2	18	42,197	38,197	5	17,3	15	28	30	30
1HG15L020020S	2	20	46,441	42,441	6	22,8	20	28	30	30
1HG15L020022S	2	22	50,686	46,686	8	28,3	25	28	30	36
1HG15L020024S	2	24	54,93	50,93	8	28,3	25	28	30	36
1HG15L020030S	2	30	67,662	63,662	8	28,3	25	28	30	36
1HG15L020040S	2	40	88,883	84,883	12	43,3	40	28	30	62
1HG15L025024S	2,5	24	68,662	63,662	8	28,3	25	28	30	36
1HG15L030020S	3	20	69,662	63,662	6	22,8	20	28	30	30
1HG15L030022S	3	22	76,028	70,028	8	28,3	25	28	30	36
1HG15L030024S	3	24	82,394	76,394	8	28,3	25	28	30	36
1HG15L030040S	3	40	133,324	127,324	12	43,3	40	28	30	62
1HG15L031020S	3,183	20	73,914	67,548	6	22,8	20	28	30	30
1HG15L031022S	3,183	22	80,668	74,302	8	29,3	25	28	30	36
1HG15L031024S	3,183	24	87,423	81,057	8	28,3	25	28	30	36
1HG15L031030S	3,183	30	107,687	101,321	8	28,3	25	28	30	36
1HG15L040020S	4	20	92,883	84,883	10	38,3	35	40	50	55
1HG15L040025S	4	25	114,103	106,103	10	38,3	35	40	50	55
1HG15L040030S	4	30	135,324	127,324	10	38,3	35	40	50	55
1HG15L040032S	4	32	143,812	135,812	10	38,3	35	40	50	55
1HG15L050020S	5	20	116,103	106,103	14	48,8	45	50	60	68
1HG15L050024S	5	24	137,324	127,324	14	48,8	45	50	60	68
1HG15L050025S	5	25	142,629	132,629	14	48,8	45	50	60	68
1HG15L050030S	5	30	169,155	159,155	14	48,8	45	50	60	68
1HG15L060020S	6	20	139,324	127,324	16	59,3	55	60	70	80
1HG15L060021S	6	21	145,69	133,69	16	59,3	55	60	70	80
1HG15L060024S	6	24	164,789	152,789	16	59,3	55	60	70	80
1HG15L060025S	6	25	171,155	159,155	16	59,3	55	60	70	80
1HG15L060030S	6	30	202,986	190,986	16	59,3	55	60	70	80
1HG15L080020S	8	20	185,766	169,766	20	79,9	75	80	100	110
1HG15L100020S	10	20	232,207	212,207	22	90,4	85	100	120	125



# Dentatura Elicoidale SERIE 310

## Helical tooth system SERIES 310

# Q5 - 20MnCr5

## Mozzo Lungo Long Hub

Qualità - Quality: **5e24**

Materiale - Material: **20MnCr5**

Denti elicoidali: **19° 31' 42" sx**

Helical tooth system: 19° 31' 42" left-hand

Angolo di pressione - Pressure angle: **20°**

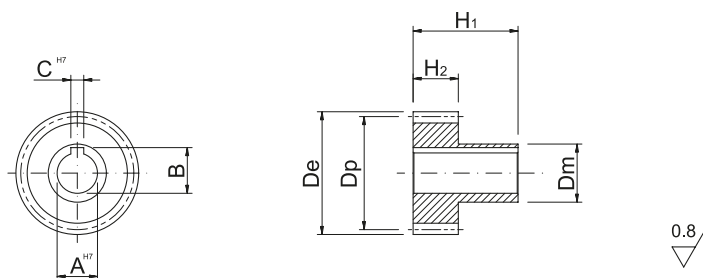
Superficie: rettificata - Surface: ground

Trattamento termico: cementazione 60 HRC

Heat-treatment: case-hardening 60 HRC

**R= 1200 N/mm<sup>2</sup> (resistenza carico a rottura)**

R= 1200 N/mm<sup>2</sup> (tensile strength)



In caso di prodotti personalizzati a disegno, invia la tua richiesta a - In case you need customized products, please send your request to: [info@gambinimeccanica.it](mailto:info@gambinimeccanica.it)

CODICE ITEM CODE	M	Z	De	Dp	CH7	B	AH7	H2	H1	Dmh8
1HG35L015016L	1,5	16	28,465	25,465	4	11,5	10	28	65	20
1HG35L015018L	1,5	18	31,648	28,648	5	17,3	15	28	65	22
1HG35L015020L	1,5	20	34,831	31,831	5	17,3	15	28	65	25
1HG35L015024L	1,5	24	41,197	38,197	6	22,8	20	28	65	32
1HG35L015030L	1,5	30	50,747	47,747	8	28,3	25	28	65	40
1HG35L015040L	1,5	40	66,662	63,662	12	43,3	40	28	65	58
1HG35L020016L	2	16	37,953	33,953	5	17,3	15	28	65	25
1HG35L020018L	2	18	42,197	38,197	5	17,3	15	28	65	30
1HG35L020020L	2	20	46,441	42,441	6	22,8	20	28	65	30
1HG35L020022L	2	22	50,686	46,686	8	28,3	25	28	65	36
1HG35L020024L	2	24	54,93	50,93	8	28,3	25	28	65	36
1HG35L020030L	2	30	67,662	63,662	8	28,3	25	28	65	36
1HG35L020040L	2	40	88,883	84,883	12	43,3	40	28	65	62
1HG35L025024L	2,5	24	68,662	63,662	8	28,3	25	28	65	36
1HG35L030020L	3	20	69,662	63,662	6	22,8	20	28	65	30
1HG35L030022L	3	22	76,028	70,028	8	28,3	25	28	65	36
1HG35L030024L	3	24	82,394	76,394	8	28,3	25	28	65	36
1HG35L030040L	3	40	133,324	127,324	12	43,3	40	28	65	62
1HG35L031020L	3,183	20	73,914	67,548	6	22,8	20	28	65	30
1HG35L031022L	3,183	22	80,668	74,302	8	28,3	25	28	65	36
1HG35L031024L	3,183	24	87,423	81,057	8	28,3	25	28	65	36
1HG35L031030L	3,183	30	107,687	101,321	8	28,3	25	28	65	36
1HG35L040020L	4	20	92,883	84,883	10	38,3	35	40	75	55
1HG35L040025L	4	25	114,103	106,103	10	38,3	35	40	75	55
1HG35L040030L	4	30	135,324	127,324	10	38,3	35	40	75	55
1HG35L040032L	4	32	143,812	135,812	10	38,3	35	40	75	55
1HG35L050020L	5	20	116,103	106,103	14	48,8	45	50	75	68
1HG35L050024L	5	24	137,324	127,324	14	48,8	45	50	75	68
1HG35L050025L	5	25	142,629	132,629	14	48,8	45	50	75	68
1HG35L050030L	5	30	169,155	159,155	14	48,8	45	50	75	68
1HG35L060020L	6	20	139,324	127,324	16	59,3	55	60	120	80
1HG35L060021L	6	21	145,69	133,69	16	59,3	55	60	120	80
1HG35L060024L	6	24	164,789	152,789	16	59,3	55	60	120	80
1HG35L060025L	6	25	171,155	159,155	16	59,3	55	60	120	80
1HG35L060030L	6	30	202,986	190,986	16	59,3	55	60	120	80
1HG35L080020L	8	20	185,766	169,766	20	79,9	75	80	145	110
1HG35L100020L	10	20	232,207	212,207	22	90,4	85	100	165	125

# Dentatura Elicoidale SERIE 315

## Helical tooth system SERIES 315

# Q5 - C45

## Mozzo Lungo Long Hub

**Qualità - Quality:** 5e24

**Materiale - Material:** C45

**Denti elicoidali: 19° 31' 42" sx**

Helical tooth system: 19° 31' 42" left-hand

**Angolo di pressione - Pressure angle:** 20°

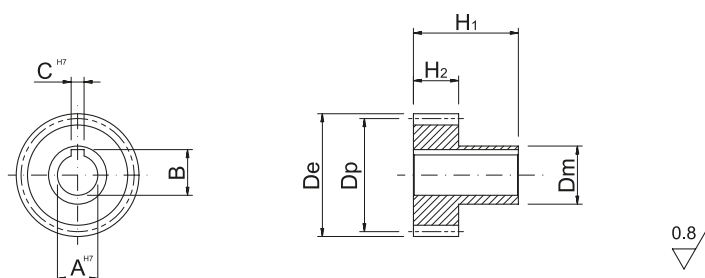
**Superficie: rettificata - Surface:** ground

**Trattamento termico: denti temprati ad induzione 55-58 HRC**

Heat-treatment: induction-hardened teeth 55-58 HRC

**R= 700 N/mm<sup>2</sup> (resistenza carico a rottura)**

R= 700 N/mm<sup>2</sup> (tensile strength)



In caso di prodotti personalizzati a disegno, invia la tua richiesta a - In case you need customized products, please send your request to: [info@gambinimeccanica.it](mailto:info@gambinimeccanica.it)

CODICE ITEM CODE	M	Z	De	Dp	CH7	B	AH7	H2	H1	Dmh8
1HG15L015016L	1,5	16	28,465	25,465	4	11,5	10	28	65	20
1HG15L015018L	1,5	18	31,648	28,648	5	17,3	15	28	65	22
1HG15L015020L	1,5	20	34,831	31,831	5	17,3	15	28	65	25
1HG15L015024L	1,5	24	41,197	38,197	6	22,8	20	28	65	32
1HG15L015030L	1,5	30	50,747	47,747	8	28,3	25	28	65	40
1HG15L015040L	1,5	40	66,662	63,662	12	43,3	40	28	65	58
1HG15L020016L	2	16	37,953	33,953	5	17,3	15	28	65	25
1HG15L020018L	2	18	42,197	38,197	5	17,3	15	28	65	30
1HG15L020020L	2	20	46,441	42,441	6	22,8	20	28	65	30
1HG15L020022L	2	22	50,686	46,686	8	28,3	25	28	65	36
1HG15L020024L	2	24	54,93	50,93	8	28,3	25	28	65	36
1HG15L020030L	2	30	67,662	63,662	8	28,3	25	28	65	36
1HG15L020040L	2	40	88,883	84,883	12	43,3	40	28	65	62
1HG15L025024L	2,5	24	68,662	63,662	8	28,3	25	28	65	36
1HG15L030020L	3	20	69,662	63,662	6	22,8	20	28	65	30
1HG15L030022L	3	22	76,028	70,028	8	28,3	25	28	65	36
1HG15L030024L	3	24	82,394	76,394	8	28,3	25	28	65	36
1HG15L030040L	3	40	133,324	127,324	12	43,3	40	28	65	62
1HG15L031020L	3,183	20	73,914	67,548	6	22,8	20	28	65	30
1HG15L031022L	3,183	22	80,668	74,302	8	28,3	25	28	65	36
1HG15L031024L	3,183	24	87,423	81,057	8	28,3	25	28	65	36
1HG15L031030L	3,183	30	107,687	101,321	8	28,3	25	28	65	36
1HG15L040020L	4	20	92,883	84,883	10	38,3	35	40	75	55
1HG15L040025L	4	25	114,103	106,103	10	38,3	35	40	75	55
1HG15L040030L	4	30	135,324	127,324	10	38,3	35	40	75	55
1HG15L040032L	4	32	143,812	135,812	10	38,3	35	40	75	55
1HG15L050020L	5	20	116,103	106,103	14	48,8	45	50	75	68
1HG15L050024L	5	24	137,324	127,324	14	48,8	45	50	75	68
1HG15L050025L	5	25	142,629	132,629	14	48,8	45	50	75	68
1HG15L050030L	5	30	169,155	159,155	14	48,8	45	50	75	68
1HG15L060020L	6	20	139,324	127,324	16	59,3	55	60	120	80
1HG15L060021L	6	21	145,69	133,69	16	59,3	55	60	120	80
1HG15L060024L	6	24	164,789	152,789	16	59,3	55	60	120	80
1HG15L060025L	6	25	171,155	159,155	16	59,3	55	60	120	80
1HG15L060030L	6	30	202,986	190,986	16	59,3	55	60	120	80
1HG15L080020L	8	20	185,766	169,766	20	79,9	75	80	145	110
1HG15L100020L	10	20	232,207	212,207	22	90,4	85	100	165	125



# Dentatura Elicoidale SERIE 320

## Helical tooth system SERIES 320

# Q6 - 20MnCr5

## Mozzo Corto Short Hub

**Qualità - Quality:** 6e24

**Materiale - Material:** 20MnCr5

**Denti elicoidali: 19° 31' 42" sx**

Helical tooth system: 19° 31' 42" left-hand

**Angolo di pressione - Pressure angle:** 20°

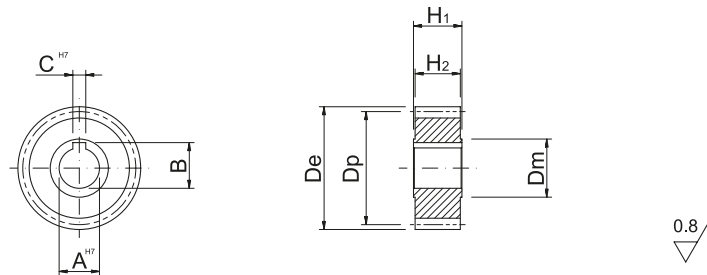
**Superficie: rettificata - Surface:** ground

**Trattamento termico: cementazione 60 HRC**

Heat-treatment: case-hardening 60 HRC

**R= 1200 N/mm<sup>2</sup> (resistenza carico a rottura)**

R= 1200 N/mm<sup>2</sup> (tensile strength)



In caso di prodotti personalizzati a disegno, invia la tua richiesta a - In case you need customized products, please send your request to: [info@gambinimeccanica.it](mailto:info@gambinimeccanica.it)

CODICE ITEM CODE	M	Z	De	Dp	CH7	B	AH7	H2	H1	Dmh8
1HG36L015016S	1,5	16	28,465	25,465	4	11,5	10	28	30	20
1HG36L015018S	1,5	18	31,648	28,648	5	17,3	15	28	30	22
1HG36L015020S	1,5	20	34,831	31,831	5	17,3	15	28	30	25
1HG36L015024S	1,5	24	41,197	38,197	6	22,8	20	28	30	32
1HG36L015030S	1,5	30	50,747	47,747	8	28,3	25	28	30	40
1HG36L015040S	1,5	40	66,662	63,662	12	43,3	40	28	30	58
1HG36L020016S	2	16	37,953	33,953	5	17,3	15	28	30	25
1HG36L020018S	2	18	42,197	38,197	5	17,3	15	28	30	30
1HG36L020020S	2	20	46,441	42,441	6	22,8	20	28	30	30
1HG36L020022S	2	22	50,686	46,686	8	28,3	25	28	30	36
1HG36L020024S	2	24	54,93	50,93	8	28,3	25	28	30	36
1HG36L020030S	2	30	67,662	63,662	8	28,3	25	28	30	36
1HG36L020040S	2	40	88,883	84,883	12	43,3	40	28	30	62
1HG36L025024S	2,5	24	68,662	63,662	8	28,3	25	28	30	36
1HG36L030020S	3	20	69,662	63,662	6	22,8	20	28	30	30
1HG36L030022S	3	22	76,028	70,028	8	28,3	25	28	30	36
1HG36L030024S	3	24	82,394	76,394	8	28,3	25	28	30	36
1HG36L030040S	3	40	133,324	127,324	12	43,3	40	28	30	62
1HG36L031020S	3,183	20	73,914	67,548	6	22,8	20	28	30	30
1HG36L031022S	3,183	22	80,668	74,302	8	29,3	25	28	30	36
1HG36L031024S	3,183	24	87,423	81,057	8	28,3	25	28	30	36
1HG36L031030S	3,183	30	107,687	101,321	8	28,3	25	28	30	36
1HG36L040020S	4	20	92,883	84,883	10	38,3	35	40	50	55
1HG36L040025S	4	25	114,103	106,103	10	38,3	35	40	50	55
1HG36L040030S	4	30	135,324	127,324	10	38,3	35	40	50	55
1HG36L040032S	4	32	143,812	135,812	10	38,3	35	40	50	55
1HG36L050020S	5	20	116,103	106,103	14	48,8	45	50	60	68
1HG36L050024S	5	24	137,324	127,324	14	48,8	45	50	60	68
1HG36L050025S	5	25	142,629	132,629	14	48,8	45	50	60	68
1HG36L050030S	5	30	169,155	159,155	14	48,8	45	50	60	68
1HG36L060020S	6	20	139,324	127,324	16	59,3	55	60	70	80
1HG36L060021S	6	21	145,69	133,69	16	59,3	55	60	70	80
1HG36L060024S	6	24	164,789	152,789	16	59,3	55	60	70	80
1HG36L060025S	6	25	171,155	159,155	16	59,3	55	60	70	80
1HG36L060030S	6	30	202,986	190,986	16	59,3	55	60	70	80
1HG36L080020S	8	20	185,766	169,766	20	79,9	75	80	100	110
1HG36L100020S	10	20	232,207	212,207	22	90,4	85	100	120	125

# Dentatura Elicoidale SERIE 325

## Helical tooth system SERIES 325

# Q6 - C45

## Mozzo Corto Short Hub

**Qualità - Quality:** 6e24

**Materiale - Material:** C45

**Denti elicoidali: 19° 31' 42" sx**

Helical tooth system: 19° 31' 42" left-hand

**Angolo di pressione - Pressure angle:** 20°

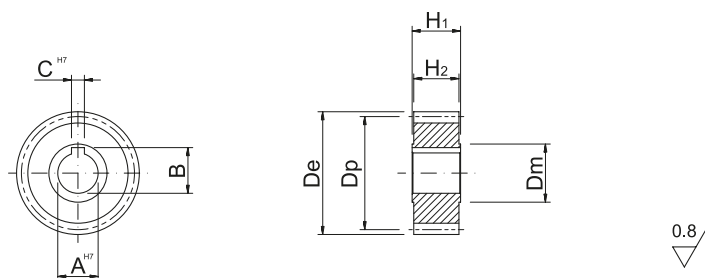
**Superficie: rettificata - Surface:** ground

**Trattamento termico: denti temprati ad induzione 55-58 HRC**

Heat-treatment: induction-hardened teeth 55-58 HRC

**R= 700 N/mm<sup>2</sup> (resistenza carico a rottura)**

R= 700 N/mm<sup>2</sup> (tensile strength)



In caso di prodotti personalizzati a disegno, invia la tua richiesta a - In case you need customized products, please send your request to: [info@gambinimeccanica.it](mailto:info@gambinimeccanica.it)

CODICE ITEM CODE	M	Z	De	Dp	CH7	B	AH7	H2	H1	Dmh8
1HG16L015016S	1,5	16	28,465	25,465	4	11,5	10	28	30	20
1HG16L015018S	1,5	18	31,648	28,648	5	17,3	15	28	30	22
1HG16L015020S	1,5	20	34,831	31,831	5	17,3	15	28	30	25
1HG16L015024S	1,5	24	41,197	38,197	6	22,8	20	28	30	32
1HG16L015030S	1,5	30	50,747	47,747	8	28,3	25	28	30	40
1HG16L015040S	1,5	40	66,662	63,662	12	43,3	40	28	30	58
1HG16L020016S	2	16	37,953	33,953	5	17,3	15	28	30	25
1HG16L020018S	2	18	42,197	38,197	5	17,3	15	28	30	30
1HG16L020020S	2	20	46,441	42,441	6	22,8	20	28	30	30
1HG16L020022S	2	22	50,686	46,686	8	28,3	25	28	30	36
1HG16L020024S	2	24	54,93	50,93	8	28,3	25	28	30	36
1HG16L020030S	2	30	67,662	63,662	8	28,3	25	28	30	36
1HG16L020040S	2	40	88,883	84,883	12	43,3	40	28	30	62
1HG16L025024S	2,5	24	68,662	63,662	8	28,3	25	28	30	36
1HG16L030020S	3	20	69,662	63,662	6	22,8	20	28	30	30
1HG16L030022S	3	22	76,028	70,028	8	28,3	25	28	30	36
1HG16L030024S	3	24	82,394	76,394	8	28,3	25	28	30	36
1HG16L030040S	3	40	133,324	127,324	12	43,3	40	28	30	62
1HG16L031020S	3,183	20	73,914	67,548	6	22,8	20	28	30	30
1HG16L031022S	3,183	22	80,668	74,302	8	29,3	25	28	30	36
1HG16L031024S	3,183	24	87,423	81,057	8	28,3	25	28	30	36
1HG16L031030S	3,183	30	107,687	101,321	8	28,3	25	28	30	36
1HG16L040020S	4	20	92,883	84,883	10	38,3	35	40	50	55
1HG16L040025S	4	25	114,103	106,103	10	38,3	35	40	50	55
1HG16L040030S	4	30	135,324	127,324	10	38,3	35	40	50	55
1HG16L040032S	4	32	143,812	135,812	10	38,3	35	40	50	55
1HG16L050020S	5	20	116,103	106,103	14	48,8	45	50	60	68
1HG16L050024S	5	24	137,324	127,324	14	48,8	45	50	60	68
1HG16L050025S	5	25	142,629	132,629	14	48,8	45	50	60	68
1HG16L050030S	5	30	169,155	159,155	14	48,8	45	50	60	68
1HG16L060020S	6	20	139,324	127,324	16	59,3	55	60	70	80
1HG16L060021S	6	21	145,69	133,69	16	59,3	55	60	70	80
1HG16L060024S	6	24	164,789	152,789	16	59,3	55	60	70	80
1HG16L060025S	6	25	171,155	159,155	16	59,3	55	60	70	80
1HG16L060030S	6	30	202,986	190,986	16	59,3	55	60	70	80
1HG16L080020S	8	20	185,766	169,766	20	79,9	75	80	100	110
1HG16L100020S	10	20	232,207	212,207	22	90,4	85	100	120	125



# Dentatura Elicoidale SERIE 330

## Helical tooth system SERIES 330

# Q6 - 20MnCr5

## Mozzo Lungo Long Hub

**Qualità - Quality:** 6e24

**Materiale - Material:** 20MnCr5

**Denti elicoidali: 19° 31' 42" sx**

Helical tooth system: 19° 31' 42" left-hand

**Angolo di pressione - Pressure angle:** 20°

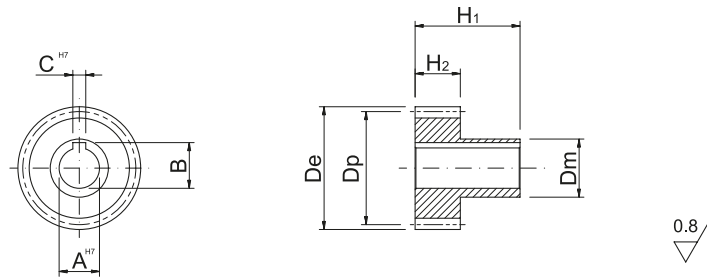
**Superficie: rettificata - Surface:** ground

**Trattamento termico: cementazione 60 HRC**

Heat-treatment: case-hardening 60 HRC

**R= 1200 N/mm<sup>2</sup> (resistenza carico a rottura)**

R= 1200 N/mm<sup>2</sup> (tensile strength)



In caso di prodotti personalizzati a disegno, invia la tua richiesta a - In case you need customized products, please send your request to: [info@gambinimeccanica.it](mailto:info@gambinimeccanica.it)

CODICE ITEM CODE	M	Z	De	Dp	CH7	B	AH7	H2	H1	Dmh8
1HG36L015016L	1,5	16	28,465	25,465	4	11,5	10	28	65	20
1HG36L015018L	1,5	18	31,648	28,648	5	17,3	15	28	65	22
1HG36L015020L	1,5	20	34,831	31,831	5	17,3	15	28	65	25
1HG36L015024L	1,5	24	41,197	38,197	6	22,8	20	28	65	32
1HG36L015030L	1,5	30	50,747	47,747	8	28,3	25	28	65	40
1HG36L015040L	1,5	40	66,662	63,662	12	43,3	40	28	65	58
1HG36L020016L	2	16	37,953	33,953	5	17,3	15	28	65	25
1HG36L020018L	2	18	42,197	38,197	5	17,3	15	28	65	30
1HG36L020020L	2	20	46,441	42,441	6	22,8	20	28	65	30
1HG36L020022L	2	22	50,686	46,686	8	28,3	25	28	65	36
1HG36L020024L	2	24	54,93	50,93	8	28,3	25	28	65	36
1HG36L020030L	2	30	67,662	63,662	8	28,3	25	28	65	36
1HG36L020040L	2	40	88,883	84,883	12	43,3	40	28	65	62
1HG36L025024L	2,5	24	68,662	63,662	8	28,3	25	28	65	36
1HG36L030020L	3	20	69,662	63,662	6	22,8	20	28	65	30
1HG36L030022L	3	22	76,028	70,028	8	28,3	25	28	65	36
1HG36L030024L	3	24	82,394	76,394	8	28,3	25	28	65	36
1HG36L030040L	3	40	133,324	127,324	12	43,3	40	28	65	62
1HG36L031020L	3,183	20	73,914	67,548	6	22,8	20	28	65	30
1HG36L031022L	3,183	22	80,668	74,302	8	28,3	25	28	65	36
1HG36L031024L	3,183	24	87,423	81,057	8	28,3	25	28	65	36
1HG36L031030L	3,183	30	107,687	101,321	8	28,3	25	28	65	36
1HG36L040020L	4	20	92,883	84,883	10	38,3	35	40	75	55
1HG36L040025L	4	25	114,103	106,103	10	38,3	35	40	75	55
1HG36L040030L	4	30	135,324	127,324	10	38,3	35	40	75	55
1HG36L040032L	4	32	143,812	135,812	10	38,3	35	40	75	55
1HG36L050020L	5	20	116,103	106,103	14	48,8	45	50	75	68
1HG36L050024L	5	24	137,324	127,324	14	48,8	45	50	75	68
1HG36L050025L	5	25	142,629	132,629	14	48,8	45	50	75	68
1HG36L050030L	5	30	169,155	159,155	14	48,8	45	50	75	68
1HG36L060020L	6	20	139,324	127,324	16	59,3	55	60	120	80
1HG36L060021L	6	21	145,69	133,69	16	59,3	55	60	120	80
1HG36L060024L	6	24	164,789	152,789	16	59,3	55	60	120	80
1HG36L060025L	6	25	171,155	159,155	16	59,3	55	60	120	80
1HG36L060030L	6	30	202,986	190,986	16	59,3	55	60	120	80
1HG36L080020L	8	20	185,766	169,766	20	79,9	75	80	145	110
1HG36L100020L	10	20	232,207	212,207	22	90,4	85	100	165	125



# Dentatura Elicoidale SERIE 335

## Helical tooth system SERIES 335

# Q6 - C45

## Mozzo Lungo Long Hub

**Qualità - Quality:** 6e24

**Materiale - Material:** C45

**Denti elicoidali: 19° 31' 42" sx**

Helical tooth system: 19° 31' 42" left-hand

**Angolo di pressione - Pressure angle:** 20°

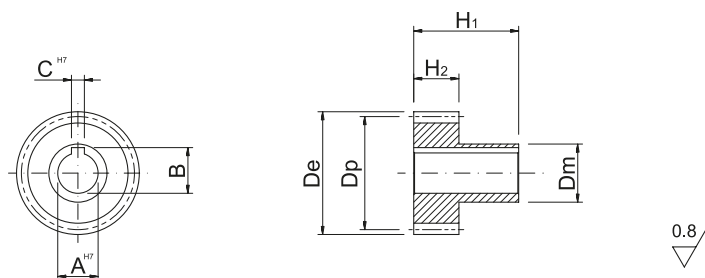
**Superficie: rettificata - Surface:** ground

**Trattamento termico: denti temprati ad induzione 55-58 HRC**

Heat-treatment: induction-hardened teeth 55-58 HRC

**R= 700 N/mm<sup>2</sup> (resistenza carico a rottura)**

R= 700 N/mm<sup>2</sup> (tensile strength)



In caso di prodotti personalizzati a disegno, invia la tua richiesta a - In case you need customized products, please send your request to: [info@gambinimeccanica.it](mailto:info@gambinimeccanica.it)

CODICE ITEM CODE	M	Z	De	Dp	CH7	B	AH7	H2	H1	Dmh8
1HG16L015016L	1,5	16	28,465	25,465	4	11,5	10	28	65	20
1HG16L015018L	1,5	18	31,648	28,648	5	17,3	15	28	65	22
1HG16L015020L	1,5	20	34,831	31,831	5	17,3	15	28	65	25
1HG16L015024L	1,5	24	41,197	38,197	6	22,8	20	28	65	32
1HG16L015030L	1,5	30	50,747	47,747	8	28,3	25	28	65	40
1HG16L015040L	1,5	40	66,662	63,662	12	43,3	40	28	65	58
1HG16L020016L	2	16	37,953	33,953	5	17,3	15	28	65	25
1HG16L020018L	2	18	42,197	38,197	5	17,3	15	28	65	30
1HG16L020020L	2	20	46,441	42,441	6	22,8	20	28	65	30
1HG16L020022L	2	22	50,686	46,686	8	28,3	25	28	65	36
1HG16L020024L	2	24	54,93	50,93	8	28,3	25	28	65	36
1HG16L020030L	2	30	67,662	63,662	8	28,3	25	28	65	36
1HG16L020040L	2	40	88,883	84,883	12	43,3	40	28	65	62
1HG16L025024L	2,5	24	68,662	63,662	8	28,3	25	28	65	36
1HG16L030020L	3	20	69,662	63,662	6	22,8	20	28	65	30
1HG16L030022L	3	22	76,028	70,028	8	28,3	25	28	65	36
1HG16L030024L	3	24	82,394	76,394	8	28,3	25	28	65	36
1HG16L030040L	3	40	133,324	127,324	12	43,3	40	28	65	62
1HG16L031020L	3,183	20	73,914	67,548	6	22,8	20	28	65	30
1HG16L031022L	3,183	22	80,668	74,302	8	28,3	25	28	65	36
1HG16L031024L	3,183	24	87,423	81,057	8	28,3	25	28	65	36
1HG16L031030L	3,183	30	107,687	101,321	8	28,3	25	28	65	36
1HG16L040020L	4	20	92,883	84,883	10	38,3	35	40	75	55
1HG16L040025L	4	25	114,103	106,103	10	38,3	35	40	75	55
1HG16L040030L	4	30	135,324	127,324	10	38,3	35	40	75	55
1HG16L040032L	4	32	143,812	135,812	10	38,3	35	40	75	55
1HG16L050020L	5	20	116,103	106,103	14	48,8	45	50	75	68
1HG16L050024L	5	24	137,324	127,324	14	48,8	45	50	75	68
1HG16L050025L	5	25	142,629	132,629	14	48,8	45	50	75	68
1HG16L050030L	5	30	169,155	159,155	14	48,8	45	50	75	68
1HG16L060020L	6	20	139,324	127,324	16	59,3	55	60	120	80
1HG16L060021L	6	21	145,69	133,69	16	59,3	55	60	120	80
1HG16L060024L	6	24	164,789	152,789	16	59,3	55	60	120	80
1HG16L060025L	6	25	171,155	159,155	16	59,3	55	60	120	80
1HG16L060030L	6	30	202,986	190,986	16	59,3	55	60	120	80
1HG16L080020L	8	20	185,766	169,766	20	79,9	75	80	145	110
1HG16L100020L	10	20	232,207	212,207	22	90,4	85	100	165	125



# Dentatura Elicoidale SERIE 340

## Helical tooth system SERIES 340

# Q7 - 20MnCr5

## Mozzo Corto Short Hub

**Qualità - Quality:** 7e25

**Materiale - Material:** 20MnCr5

**Denti elicoidali: 19° 31' 42" sx**

Helical tooth system: 19° 31' 42" left-hand

**Angolo di pressione - Pressure angle:** 20°

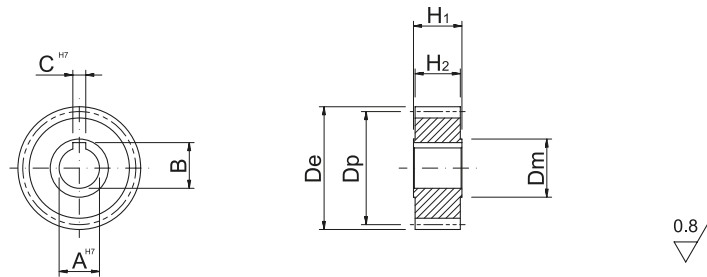
**Superficie: rettificata - Surface:** ground

**Trattamento termico: cementazione 60 HRC**

Heat-treatment: case-hardening 60 HRC

**R= 1200 N/mm<sup>2</sup> (resistenza carico a rottura)**

R= 1200 N/mm<sup>2</sup> (tensile strength)



In caso di prodotti personalizzati a disegno, invia la tua richiesta a - In case you need customized products, please send your request to: [info@gambinimeccanica.it](mailto:info@gambinimeccanica.it)

CODICE ITEM CODE	M	Z	De	Dp	CH7	B	AH7	H2	H1	Dmh8
1HG37L015016S	1,5	16	28,465	25,465	4	11,5	10	28	30	20
1HG37L015018S	1,5	18	31,648	28,648	5	17,3	15	28	30	22
1HG37L015020S	1,5	20	34,831	31,831	5	17,3	15	28	30	25
1HG37L015024S	1,5	24	41,197	38,197	6	22,8	20	28	30	32
1HG37L015030S	1,5	30	50,747	47,747	8	28,3	25	28	30	40
1HG37L015040S	1,5	40	66,662	63,662	12	43,3	40	28	30	58
1HG37L020016S	2	16	37,953	33,953	5	17,3	15	28	30	25
1HG37L020018S	2	18	42,197	38,197	5	17,3	15	28	30	30
1HG37L020020S	2	20	46,441	42,441	6	22,8	20	28	30	30
1HG37L020022S	2	22	50,686	46,686	8	28,3	25	28	30	36
1HG37L020024S	2	24	54,93	50,93	8	28,3	25	28	30	36
1HG37L020030S	2	30	67,662	63,662	8	28,3	25	28	30	36
1HG37L020040S	2	40	88,883	84,883	12	43,3	40	28	30	62
1HG37L025024S	2,5	24	68,662	63,662	8	28,3	25	28	30	36
1HG37L030020S	3	20	69,662	63,662	6	22,8	20	28	30	30
1HG37L030022S	3	22	76,028	70,028	8	28,3	25	28	30	36
1HG37L030024S	3	24	82,394	76,394	8	28,3	25	28	30	36
1HG37L030040S	3	40	133,324	127,324	12	43,3	40	28	30	62
1HG37L031020S	3,183	20	73,914	67,548	6	22,8	20	28	30	30
1HG37L031022S	3,183	22	80,668	74,302	8	29,3	25	28	30	36
1HG37L031024S	3,183	24	87,423	81,057	8	28,3	25	28	30	36
1HG37L031030S	3,183	30	107,687	101,321	8	28,3	25	28	30	36
1HG37L040020S	4	20	92,883	84,883	10	38,3	35	40	50	55
1HG37L040025S	4	25	114,103	106,103	10	38,3	35	40	50	55
1HG37L040030S	4	30	135,324	127,324	10	38,3	35	40	50	55
1HG37L040032S	4	32	143,812	135,812	10	38,3	35	40	50	55
1HG37L050020S	5	20	116,103	106,103	14	48,8	45	50	60	68
1HG37L050024S	5	24	137,324	127,324	14	48,8	45	50	60	68
1HG37L050025S	5	25	142,629	132,629	14	48,8	45	50	60	68
1HG37L050030S	5	30	169,155	159,155	14	48,8	45	50	60	68
1HG37L060020S	6	20	139,324	127,324	16	59,3	55	60	70	80
1HG37L060021S	6	21	145,69	133,69	16	59,3	55	60	70	80
1HG37L060024S	6	24	164,789	152,789	16	59,3	55	60	70	80
1HG37L060025S	6	25	171,155	159,155	16	59,3	55	60	70	80
1HG37L060030S	6	30	202,986	190,986	16	59,3	55	60	70	80
1HG37L080020S	8	20	185,766	169,766	20	79,9	75	80	100	110
1HG37L100020S	10	20	232,207	212,207	22	90,4	85	100	120	125

# Dentatura Elicoidale SERIE 345

## Helical tooth system SERIES 345

# Q7 - C45

## Mozzo Corto Short Hub

**Qualità - Quality:** 7e25

**Materiale - Material:** C45

**Denti elicoidali: 19° 31' 42" sx**

Helical tooth system: 19° 31' 42" left-hand

**Angolo di pressione - Pressure angle:** 20°

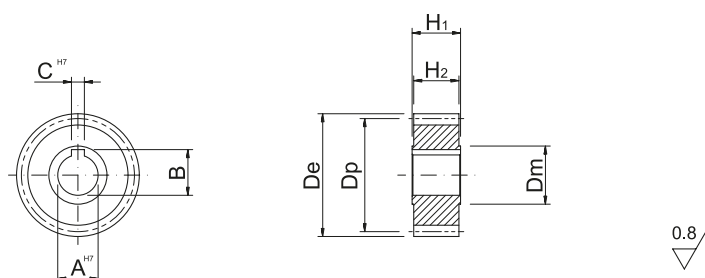
**Superficie: rettificata - Surface:** ground

**Trattamento termico: denti temprati ad induzione 55-58 HRC**

Heat-treatment: induction-hardened teeth 55-58 HRC

**R= 700 N/mm<sup>2</sup> (resistenza carico a rottura)**

R= 700 N/mm<sup>2</sup> (tensile strength)



In caso di prodotti personalizzati a disegno, invia la tua richiesta a - In case you need customized products, please send your request to: [info@gambinimeccanica.it](mailto:info@gambinimeccanica.it)

CODICE ITEM CODE	M	Z	De	Dp	CH7	B	AH7	H2	H1	Dmh8
1HG17L015016S	1,5	16	28,465	25,465	4	11,5	10	28	30	20
1HG17L015018S	1,5	18	31,648	28,648	5	17,3	15	28	30	22
1HG17L015020S	1,5	20	34,831	31,831	5	17,3	15	28	30	25
1HG17L015024S	1,5	24	41,197	38,197	6	22,8	20	28	30	32
1HG17L015030S	1,5	30	50,747	47,747	8	28,3	25	28	30	40
1HG17L015040S	1,5	40	66,662	63,662	12	43,3	40	28	30	58
1HG17L020016S	2	16	37,953	33,953	5	17,3	15	28	30	25
1HG17L020018S	2	18	42,197	38,197	5	17,3	15	28	30	30
1HG17L020020S	2	20	46,441	42,441	6	22,8	20	28	30	30
1HG17L020022S	2	22	50,686	46,686	8	28,3	25	28	30	36
1HG17L020024S	2	24	54,93	50,93	8	28,3	25	28	30	36
1HG17L020030S	2	30	67,662	63,662	8	28,3	25	28	30	36
1HG17L020040S	2	40	88,883	84,883	12	43,3	40	28	30	62
1HG17L025024S	2,5	24	68,662	63,662	8	28,3	25	28	30	36
1HG17L030020S	3	20	69,662	63,662	6	22,8	20	28	30	30
1HG17L030022S	3	22	76,028	70,028	8	28,3	25	28	30	36
1HG17L030024S	3	24	82,394	76,394	8	28,3	25	28	30	36
1HG17L030040S	3	40	133,324	127,324	12	43,3	40	28	30	62
1HG17L031020S	3,183	20	73,914	67,548	6	22,8	20	28	30	30
1HG17L031022S	3,183	22	80,668	74,302	8	29,3	25	28	30	36
1HG17L031024S	3,183	24	87,423	81,057	8	28,3	25	28	30	36
1HG17L031030S	3,183	30	107,687	101,321	8	28,3	25	28	30	36
1HG17L040020S	4	20	92,883	84,883	10	38,3	35	40	50	55
1HG17L040025S	4	25	114,103	106,103	10	38,3	35	40	50	55
1HG17L040030S	4	30	135,324	127,324	10	38,3	35	40	50	55
1HG17L040032S	4	32	143,812	135,812	10	38,3	35	40	50	55
1HG17L050020S	5	20	116,103	106,103	14	48,8	45	50	60	68
1HG17L050024S	5	24	137,324	127,324	14	48,8	45	50	60	68
1HG17L050025S	5	25	142,629	132,629	14	48,8	45	50	60	68
1HG17L050030S	5	30	169,155	159,155	14	48,8	45	50	60	68
1HG17L060020S	6	20	139,324	127,324	16	59,3	55	60	70	80
1HG17L060021S	6	21	145,69	133,69	16	59,3	55	60	70	80
1HG17L060024S	6	24	164,789	152,789	16	59,3	55	60	70	80
1HG17L060025S	6	25	171,155	159,155	16	59,3	55	60	70	80
1HG17L060030S	6	30	202,986	190,986	16	59,3	55	60	70	80
1HG17L080020S	8	20	185,766	169,766	20	79,9	75	80	100	110
1HG17L100020S	10	20	232,207	212,207	22	90,4	85	100	120	125



# Dentatura Elicoidale SERIE 350

## Helical tooth system SERIES 350

# Q7 - 20MnCr5

## Mozzo Lungo Long Hub

**Qualità - Quality:** 7e25

**Materiale - Material:** 20MnCr5

**Denti elicoidali: 19° 31' 42" sx**

Helical tooth system: 19° 31' 42" left-hand

**Angolo di pressione - Pressure angle:** 20°

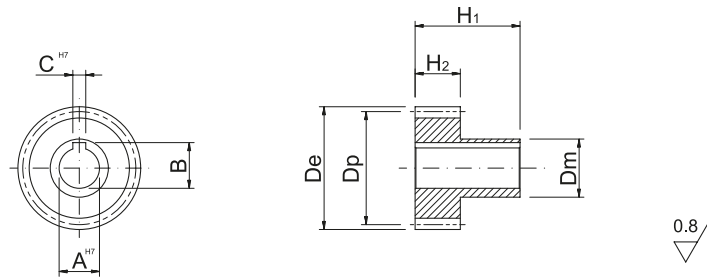
**Superficie: rettificata - Surface:** ground

**Trattamento termico: cementazione 60 HRC**

Heat-treatment: case-hardening 60 HRC

**R= 1200 N/mm<sup>2</sup> (resistenza carico a rottura)**

R= 1200 N/mm<sup>2</sup> (tensile strength)



In caso di prodotti personalizzati a disegno, invia la tua richiesta a - In case you need customized products, please send your request to: [info@gambinimeccanica.it](mailto:info@gambinimeccanica.it)

CODICE ITEM CODE	M	Z	De	Dp	CH7	B	AH7	H2	H1	Dmh8
1HG37L015016L	1,5	16	28,465	25,465	4	11,5	10	28	65	20
1HG37L015018L	1,5	18	31,648	28,648	5	17,3	15	28	65	22
1HG37L015020L	1,5	20	34,831	31,831	5	17,3	15	28	65	25
1HG37L015024L	1,5	24	41,197	38,197	6	22,8	20	28	65	32
1HG37L015030L	1,5	30	50,747	47,747	8	28,3	25	28	65	40
1HG37L015040L	1,5	40	66,662	63,662	12	43,3	40	28	65	58
1HG37L020016L	2	16	37,953	33,953	5	17,3	15	28	65	25
1HG37L020018L	2	18	42,197	38,197	5	17,3	15	28	65	30
1HG37L020020L	2	20	46,441	42,441	6	22,8	20	28	65	30
1HG37L020022L	2	22	50,686	46,686	8	28,3	25	28	65	36
1HG37L020024L	2	24	54,93	50,93	8	28,3	25	28	65	36
1HG37L020030L	2	30	67,662	63,662	8	28,3	25	28	65	36
1HG37L020040L	2	40	88,883	84,883	12	43,3	40	28	65	62
1HG37L025024L	2,5	24	68,662	63,662	8	28,3	25	28	65	36
1HG37L030020L	3	20	69,662	63,662	6	22,8	20	28	65	30
1HG37L030022L	3	22	76,028	70,028	8	28,3	25	28	65	36
1HG37L030024L	3	24	82,394	76,394	8	28,3	25	28	65	36
1HG37L030040L	3	40	133,324	127,324	12	43,3	40	28	65	62
1HG37L031020L	3,183	20	73,914	67,548	6	22,8	20	28	65	30
1HG37L031022L	3,183	22	80,668	74,302	8	28,3	25	28	65	36
1HG37L031024L	3,183	24	87,423	81,057	8	28,3	25	28	65	36
1HG37L031030L	3,183	30	107,687	101,321	8	28,3	25	28	65	36
1HG37L040020L	4	20	92,883	84,883	10	38,3	35	40	75	55
1HG37L040025L	4	25	114,103	106,103	10	38,3	35	40	75	55
1HG37L040030L	4	30	135,324	127,324	10	38,3	35	40	75	55
1HG37L040032L	4	32	143,812	135,812	10	38,3	35	40	75	55
1HG37L050020L	5	20	116,103	106,103	14	48,8	45	50	75	68
1HG37L050024L	5	24	137,324	127,324	14	48,8	45	50	75	68
1HG37L050025L	5	25	142,629	132,629	14	48,8	45	50	75	68
1HG37L050030L	5	30	169,155	159,155	14	48,8	45	50	75	68
1HG37L060020L	6	20	139,324	127,324	16	59,3	55	60	120	80
1HG37L060021L	6	21	145,69	133,69	16	59,3	55	60	120	80
1HG37L060024L	6	24	164,789	152,789	16	59,3	55	60	120	80
1HG37L060025L	6	25	171,155	159,155	16	59,3	55	60	120	80
1HG37L060030L	6	30	202,986	190,986	16	59,3	55	60	120	80
1HG37L080020L	8	20	185,766	169,766	20	79,9	75	80	145	110
1HG37L100020L	10	20	232,207	212,207	22	90,4	85	100	165	125

# Dentatura Elicoidale SERIE 355

## Helical tooth system SERIES 355

# Q7 - C45

## Mozzo Lungo Long Hub

**Qualità - Quality:** 7e25

**Materiale - Material:** C45

**Denti elicoidali: 19° 31' 42" sx**

Helical tooth system: 19° 31' 42" left-hand

**Angolo di pressione - Pressure angle:** 20°

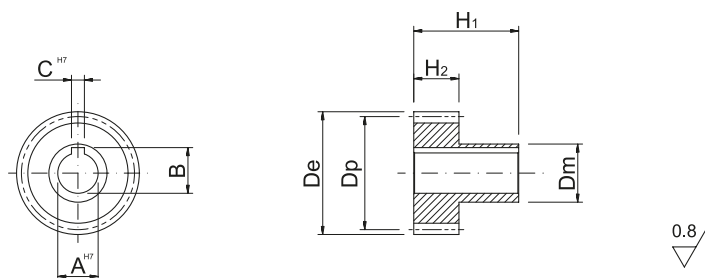
**Superficie: rettificata - Surface:** ground

**Trattamento termico: denti temprati ad induzione 55-58 HRC**

Heat-treatment: induction-hardened teeth 55-58 HRC

**R= 700 N/mm<sup>2</sup> (resistenza carico a rottura)**

R= 700 N/mm<sup>2</sup> (tensile strength)



In caso di prodotti personalizzati a disegno, invia la tua richiesta a - In case you need customized products, please send your request to: [info@gambinimeccanica.it](mailto:info@gambinimeccanica.it)

CODICE ITEM CODE	M	Z	De	Dp	CH7	B	AH7	H2	H1	Dmh8
1HG17L015016L	1,5	16	28,465	25,465	4	11,5	10	28	65	20
1HG17L015018L	1,5	18	31,648	28,648	5	17,3	15	28	65	22
1HG17L015020L	1,5	20	34,831	31,831	5	17,3	15	28	65	25
1HG17L015024L	1,5	24	41,197	38,197	6	22,8	20	28	65	32
1HG17L015030L	1,5	30	50,747	47,747	8	28,3	25	28	65	40
1HG17L015040L	1,5	40	66,662	63,662	12	43,3	40	28	65	58
1HG17L020016L	2	16	37,953	33,953	5	17,3	15	28	65	25
1HG17L020018L	2	18	42,197	38,197	5	17,3	15	28	65	30
1HG17L020020L	2	20	46,441	42,441	6	22,8	20	28	65	30
1HG17L020022L	2	22	50,686	46,686	8	28,3	25	28	65	36
1HG17L020024L	2	24	54,93	50,93	8	28,3	25	28	65	36
1HG17L020030L	2	30	67,662	63,662	8	28,3	25	28	65	36
1HG17L020040L	2	40	88,883	84,883	12	43,3	40	28	65	62
1HG17L025024L	2,5	24	68,662	63,662	8	28,3	25	28	65	36
1HG17L030020L	3	20	69,662	63,662	6	22,8	20	28	65	30
1HG17L030022L	3	22	76,028	70,028	8	28,3	25	28	65	36
1HG17L030024L	3	24	82,394	76,394	8	28,3	25	28	65	36
1HG17L030040L	3	40	133,324	127,324	12	43,3	40	28	65	62
1HG17L031020L	3,183	20	73,914	67,548	6	22,8	20	28	65	30
1HG17L031022L	3,183	22	80,668	74,302	8	28,3	25	28	65	36
1HG17L031024L	3,183	24	87,423	81,057	8	28,3	25	28	65	36
1HG17L031030L	3,183	30	107,687	101,321	8	28,3	25	28	65	36
1HG17L040020L	4	20	92,883	84,883	10	38,3	35	40	75	55
1HG17L040025L	4	25	114,103	106,103	10	38,3	35	40	75	55
1HG17L040030L	4	30	135,324	127,324	10	38,3	35	40	75	55
1HG17L040032L	4	32	143,812	135,812	10	38,3	35	40	75	55
1HG17L050020L	5	20	116,103	106,103	14	48,8	45	50	75	68
1HG17L050024L	5	24	137,324	127,324	14	48,8	45	50	75	68
1HG17L050025L	5	25	142,629	132,629	14	48,8	45	50	75	68
1HG17L050030L	5	30	169,155	159,155	14	48,8	45	50	75	68
1HG17L060020L	6	20	139,324	127,324	16	59,3	55	60	120	80
1HG17L060021L	6	21	145,69	133,69	16	59,3	55	60	120	80
1HG17L060024L	6	24	164,789	152,789	16	59,3	55	60	120	80
1HG17L060025L	6	25	171,155	159,155	16	59,3	55	60	120	80
1HG17L060030L	6	30	202,986	190,986	16	59,3	55	60	120	80
1HG17L080020L	8	20	185,766	169,766	20	79,9	75	80	145	110
1HG17L100020L	10	20	232,207	212,207	22	90,4	85	100	165	125



# Dentatura Elicoidale SERIE 360

## Helical tooth system SERIES 360

# Q9 - C45

## Mozzo Corto Short Hub

**Qualità - Quality:** 9e25

**Materiale - Material:** C45

**Denti elicoidali: 19° 31' 42" sx**

Helical tooth system: 19° 31' 42" left-hand

**Angolo di pressione - Pressure angle:** 20°

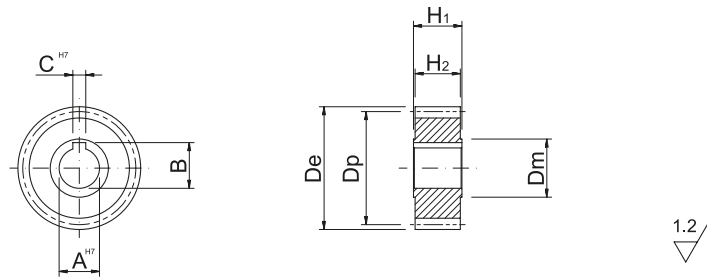
**Superficie: finitura di utensile - Surface:** milled teeth

**Trattamento termico: non incluso**

Heat-treatment: not included

**R= 700 N/mm<sup>2</sup> (resistenza carico a rottura)**

R= 700 N/mm<sup>2</sup> (tensile strength)



In caso di prodotti personalizzati a disegno, invia la tua richiesta a - In case you need customized products, please send your request to: [info@gambinimeccanica.it](mailto:info@gambinimeccanica.it)

CODICE ITEM CODE	M	Z	De	Dp	CH7	B	AH7	H2	H1	Dmh8
1HG19L015016S	1,5	16	28,465	25,465	4	11,5	10	28	30	20
1HG19L015018S	1,5	18	31,648	28,648	5	17,3	15	28	30	22
1HG19L015020S	1,5	20	34,831	31,831	5	17,3	15	28	30	25
1HG19L015024S	1,5	24	41,197	38,197	6	22,8	20	28	30	32
1HG19L015030S	1,5	30	50,747	47,747	8	28,3	25	28	30	40
1HG19L015040S	1,5	40	66,662	63,662	12	43,3	40	28	30	58
1HG19L020016S	2	16	37,953	33,953	5	17,3	15	28	30	25
1HG19L020018S	2	18	42,197	38,197	5	17,3	15	28	30	30
1HG19L020020S	2	20	46,441	42,441	6	22,8	20	28	30	30
1HG19L020022S	2	22	50,686	46,686	8	28,3	25	28	30	36
1HG19L020024S	2	24	54,93	50,93	8	28,3	25	28	30	36
1HG19L020030S	2	30	67,662	63,662	8	28,3	25	28	30	36
1HG19L020040S	2	40	88,883	84,883	12	43,3	40	28	30	62
1HG19L025024S	2,5	24	68,662	63,662	8	28,3	25	28	30	36
1HG19L030020S	3	20	69,662	63,662	6	22,8	20	28	30	30
1HG19L030022S	3	22	76,028	70,028	8	28,3	25	28	30	36
1HG19L030024S	3	24	82,394	76,394	8	28,3	25	28	30	36
1HG19L030040S	3	40	133,324	127,324	12	43,3	40	28	30	62
1HG19L031020S	3,183	20	73,914	67,548	6	22,8	20	28	30	30
1HG19L031022S	3,183	22	80,668	74,302	8	29,3	25	28	30	36
1HG19L031024S	3,183	24	87,423	81,057	8	28,3	25	28	30	36
1HG19L031030S	3,183	30	107,687	101,321	8	28,3	25	28	30	36
1HG19L040020S	4	20	92,883	84,883	10	38,3	35	40	50	55
1HG19L040025S	4	25	114,103	106,103	10	38,3	35	40	50	55
1HG19L040030S	4	30	135,324	127,324	10	38,3	35	40	50	55
1HG19L040032S	4	32	143,812	135,812	10	38,3	35	40	50	55
1HG19L050020S	5	20	116,103	106,103	14	48,8	45	50	60	68
1HG19L050024S	5	24	137,324	127,324	14	48,8	45	50	60	68
1HG19L050025S	5	25	142,629	132,629	14	48,8	45	50	60	68
1HG19L050030S	5	30	169,155	159,155	14	48,8	45	50	60	68
1HG19L060020S	6	20	139,324	127,324	16	59,3	55	60	70	80
1HG19L060021S	6	21	145,69	133,69	16	59,3	55	60	70	80
1HG19L060024S	6	24	164,789	152,789	16	59,3	55	60	70	80
1HG19L060025S	6	25	171,155	159,155	16	59,3	55	60	70	80
1HG19L060030S	6	30	202,986	190,986	16	59,3	55	60	70	80
1HG19L080020S	8	20	185,766	169,766	20	79,9	75	80	100	110
1HG19L100020S	10	20	232,207	212,207	22	90,4	85	100	120	125

# Dentatura Elicoidale SERIE 365

## Helical tooth system SERIES 365

# Q9 - C45

## Mozzo Lungo Long Hub

**Qualità - Quality:** 9e25

**Materiale - Material:** C45

**Denti elicoidali: 19° 31' 42" sx**

Helical tooth system: 19° 31' 42" left-hand

**Angolo di pressione - Pressure angle:** 20°

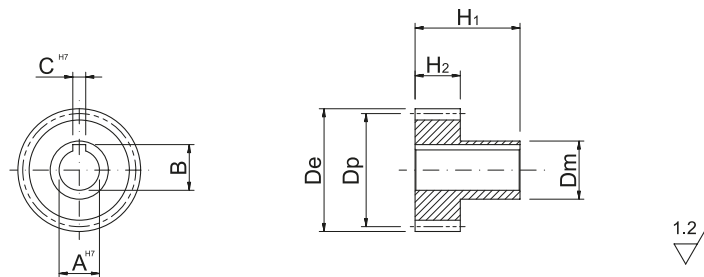
**Superficie: finitura di utensile - Surface:** milled teeth

**Trattamento termico: non incluso**

Heat-treatment: not included

**R= 700 N/mm<sup>2</sup> (resistenza carico a rottura)**

R= 700 N/mm<sup>2</sup> (tensile strength)



In caso di prodotti personalizzati a disegno, invia la tua richiesta a - In case you need customized products, please send your request to: [info@gambinimeccanica.it](mailto:info@gambinimeccanica.it)

CODICE ITEM CODE	M	Z	De	Dp	CH7	B	AH7	H2	H1	Dmh8
1HG19L015016L	1,5	16	28,465	25,465	4	11,5	10	28	65	20
1HG19L015018L	1,5	18	31,648	28,648	5	17,3	15	28	65	22
1HG19L015020L	1,5	20	34,831	31,831	5	17,3	15	28	65	25
1HG19L015024L	1,5	24	41,197	38,197	6	22,8	20	28	65	32
1HG19L015030L	1,5	30	50,747	47,747	8	28,3	25	28	65	40
1HG19L015040L	1,5	40	66,662	63,662	12	43,3	40	28	65	58
1HG19L020016L	2	16	37,953	33,953	5	17,3	15	28	65	25
1HG19L020018L	2	18	42,197	38,197	5	17,3	15	28	65	30
1HG19L020020L	2	20	46,441	42,441	6	22,8	20	28	65	30
1HG19L020022L	2	22	50,686	46,686	8	28,3	25	28	65	36
1HG19L020024L	2	24	54,93	50,93	8	28,3	25	28	65	36
1HG19L020030L	2	30	67,662	63,662	8	28,3	25	28	65	36
1HG19L020040L	2	40	88,883	84,883	12	43,3	40	28	65	62
1HG19L025024L	2,5	24	68,662	63,662	8	28,3	25	28	65	36
1HG19L030020L	3	20	69,662	63,662	6	22,8	20	28	65	30
1HG19L030022L	3	22	76,028	70,028	8	28,3	25	28	65	36
1HG19L030024L	3	24	82,394	76,394	8	28,3	25	28	65	36
1HG19L030040L	3	40	133,324	127,324	12	43,3	40	28	65	62
1HG19L031020L	3,183	20	73,914	67,548	6	22,8	20	28	65	30
1HG19L031022L	3,183	22	80,668	74,302	8	28,3	25	28	65	36
1HG19L031024L	3,183	24	87,423	81,057	8	28,3	25	28	65	36
1HG19L031030L	3,183	30	107,687	101,321	8	28,3	25	28	65	36
1HG19L040020L	4	20	92,883	84,883	10	38,3	35	40	75	55
1HG19L040025L	4	25	114,103	106,103	10	38,3	35	40	75	55
1HG19L040030L	4	30	135,324	127,324	10	38,3	35	40	75	55
1HG19L040032L	4	32	143,812	135,812	10	38,3	35	40	75	55
1HG19L050020L	5	20	116,103	106,103	14	48,8	45	50	75	68
1HG19L050024L	5	24	137,324	127,324	14	48,8	45	50	75	68
1HG19L050025L	5	25	142,629	132,629	14	48,8	45	50	75	68
1HG19L050030L	5	30	169,155	159,155	14	48,8	45	50	75	68
1HG19L060020L	6	20	139,324	127,324	16	59,3	55	60	120	80
1HG19L060021L	6	21	145,69	133,69	16	59,3	55	60	120	80
1HG19L060024L	6	24	164,789	152,789	16	59,3	55	60	120	80
1HG19L060025L	6	25	171,155	159,155	16	59,3	55	60	120	80
1HG19L060030L	6	30	202,986	190,986	16	59,3	55	60	120	80
1HG19L080020L	8	20	185,766	169,766	20	79,9	75	80	145	110
1HG19L100020L	10	20	232,207	212,207	22	90,4	85	100	165	125



# Dentatura Elicoidale SERIE 370

## Helical tooth system SERIES 370

# Q10 - C45

## Mozzo Corto Short Hub

Qualità - Quality: **10e25** / Materiale - Material: **C45**

Denti elicoidali: **19° 31' 42" sx**

Helical tooth system: **19° 31' 42" left-hand**

Superficie: **finitura di utensile, foro interno rettificato**

Surface: **milled teeth, ground internal hole**

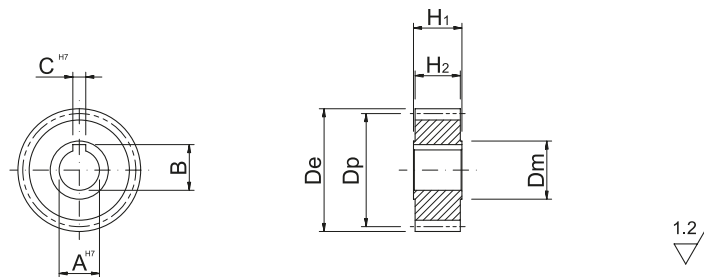
Angolo di pressione - Pressure angle: **20°**

Trattamento termico: **denti temprati ad induzione 55-58 HRC**

Heat-treatment: **induction-hardened teeth 55-58 HRC**

**R= 700 N/mm<sup>2</sup> (resistenza carico a rottura)**

**R= 700 N/mm<sup>2</sup> (tensile strength)**



In caso di prodotti personalizzati a disegno, invia la tua richiesta a - In case you need customized products, please send your request to: [info@gambinimeccanica.it](mailto:info@gambinimeccanica.it)

CODICE ITEM CODE	M	Z	De	Dp	CH7	B	AH7	H2	H1	Dmh8
1HG11L015016S	1,5	16	28,465	25,465	4	11,5	10	28	30	20
1HG11L015018S	1,5	18	31,648	28,648	5	17,3	15	28	30	22
1HG11L015020S	1,5	20	34,831	31,831	5	17,3	15	28	30	25
1HG11L015024S	1,5	24	41,197	38,197	6	22,8	20	28	30	32
1HG11L015030S	1,5	30	50,747	47,747	8	28,3	25	28	30	40
1HG11L015040S	1,5	40	66,662	63,662	12	43,3	40	28	30	58
1HG11L020016S	2	16	37,953	33,953	5	17,3	15	28	30	25
1HG11L020018S	2	18	42,197	38,197	5	17,3	15	28	30	30
1HG11L020020S	2	20	46,441	42,441	6	22,8	20	28	30	30
1HG11L020022S	2	22	50,686	46,686	8	28,3	25	28	30	36
1HG11L020024S	2	24	54,93	50,93	8	28,3	25	28	30	36
1HG11L020030S	2	30	67,662	63,662	8	28,3	25	28	30	36
1HG11L020040S	2	40	88,883	84,883	12	43,3	40	28	30	62
1HG11L025024S	2,5	24	68,662	63,662	8	28,3	25	28	30	36
1HG11L030020S	3	20	69,662	63,662	6	22,8	20	28	30	30
1HG11L030022S	3	22	76,028	70,028	8	28,3	25	28	30	36
1HG11L030024S	3	24	82,394	76,394	8	28,3	25	28	30	36
1HG11L030040S	3	40	133,324	127,324	12	43,3	40	28	30	62
1HG11L031020S	3,183	20	73,914	67,548	6	22,8	20	28	30	30
1HG11L031022S	3,183	22	80,668	74,302	8	29,3	25	28	30	36
1HG11L031024S	3,183	24	87,423	81,057	8	28,3	25	28	30	36
1HG11L031030S	3,183	30	107,687	101,321	8	28,3	25	28	30	36
1HG11L040020S	4	20	92,883	84,883	10	38,3	35	40	50	55
1HG11L040025S	4	25	114,103	106,103	10	38,3	35	40	50	55
1HG11L040030S	4	30	135,324	127,324	10	38,3	35	40	50	55
1HG11L040032S	4	32	143,812	135,812	10	38,3	35	40	50	55
1HG11L050020S	5	20	116,103	106,103	14	48,8	45	50	60	68
1HG11L050024S	5	24	137,324	127,324	14	48,8	45	50	60	68
1HG11L050025S	5	25	142,629	132,629	14	48,8	45	50	60	68
1HG11L050030S	5	30	169,155	159,155	14	48,8	45	50	60	68
1HG11L060020S	6	20	139,324	127,324	16	59,3	55	60	70	80
1HG11L060021S	6	21	145,69	133,69	16	59,3	55	60	70	80
1HG11L060024S	6	24	164,789	152,789	16	59,3	55	60	70	80
1HG11L060025S	6	25	171,155	159,155	16	59,3	55	60	70	80
1HG11L060030S	6	30	202,986	190,986	16	59,3	55	60	70	80
1HG11L080020S	8	20	185,766	169,766	20	79,9	75	80	100	110
1HG11L100020S	10	20	232,207	212,207	22	90,4	85	100	120	125



# Dentatura Elicoidale SERIE 375

## Helical tooth system SERIES 375

# Q10 - C45

## Mozzo Lungo Long Hub

Qualità - Quality: **10e25** / Materiale - Material: **C45**

Denti elicoidali: **19° 31' 42"** sx

Helical tooth system: 19° 31' 42" left-hand

Superficie: **finitura di utensile, foro interno rettificato**

Surface: milled teeth, ground internal hole

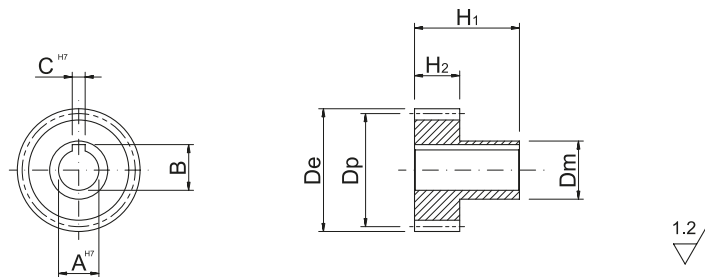
Angolo di pressione - Pressure angle: **20°**

Trattamento termico: **denti temprati ad induzione 55-58 HRC**

Heat-treatment: induction-hardened teeth 55-58 HRC

**R= 700 N/mm<sup>2</sup> (resistenza carico a rottura)**

R= 700 N/mm<sup>2</sup> (tensile strength)



In caso di prodotti personalizzati a disegno, invia la tua richiesta a - In case you need customized products, please send your request to: [info@gambinimeccanica.it](mailto:info@gambinimeccanica.it)

CODICE ITEM CODE	M	Z	De	Dp	CH7	B	AH7	H2	H1	Dmh8
1HG11L015016L	1,5	16	28,465	25,465	4	11,5	10	28	65	20
1HG11L015018L	1,5	18	31,648	28,648	5	17,3	15	28	65	22
1HG11L015020L	1,5	20	34,831	31,831	5	17,3	15	28	65	25
1HG11L015024L	1,5	24	41,197	38,197	6	22,8	20	28	65	32
1HG11L015030L	1,5	30	50,747	47,747	8	28,3	25	28	65	40
1HG11L015040L	1,5	40	66,662	63,662	12	43,3	40	28	65	58
1HG11L020016L	2	16	37,953	33,953	5	17,3	15	28	65	25
1HG11L020018L	2	18	42,197	38,197	5	17,3	15	28	65	30
1HG11L020020L	2	20	46,441	42,441	6	22,8	20	28	65	30
1HG11L020022L	2	22	50,686	46,686	8	28,3	25	28	65	36
1HG11L020024L	2	24	54,93	50,93	8	28,3	25	28	65	36
1HG11L020030L	2	30	67,662	63,662	8	28,3	25	28	65	36
1HG11L020040L	2	40	88,883	84,883	12	43,3	40	28	65	62
1HG11L025024L	2,5	24	68,662	63,662	8	28,3	25	28	65	36
1HG11L030020L	3	20	69,662	63,662	6	22,8	20	28	65	30
1HG11L030022L	3	22	76,028	70,028	8	28,3	25	28	65	36
1HG11L030024L	3	24	82,394	76,394	8	28,3	25	28	65	36
1HG11L030040L	3	40	133,324	127,324	12	43,3	40	28	65	62
1HG11L031020L	3,183	20	73,914	67,548	6	22,8	20	28	65	30
1HG11L031022L	3,183	22	80,668	74,302	8	28,3	25	28	65	36
1HG11L031024L	3,183	24	87,423	81,057	8	28,3	25	28	65	36
1HG11L031030L	3,183	30	107,687	101,321	8	28,3	25	28	65	36
1HG11L040020L	4	20	92,883	84,883	10	38,3	35	40	75	55
1HG11L040025L	4	25	114,103	106,103	10	38,3	35	40	75	55
1HG11L040030L	4	30	135,324	127,324	10	38,3	35	40	75	55
1HG11L040032L	4	32	143,812	135,812	10	38,3	35	40	75	55
1HG11L050020L	5	20	116,103	106,103	14	48,8	45	50	75	68
1HG11L050024L	5	24	137,324	127,324	14	48,8	45	50	75	68
1HG11L050025L	5	25	142,629	132,629	14	48,8	45	50	75	68
1HG11L050030L	5	30	169,155	159,155	14	48,8	45	50	75	68
1HG11L060020L	6	20	139,324	127,324	16	59,3	55	60	120	80
1HG11L060021L	6	21	145,69	133,69	16	59,3	55	60	120	80
1HG11L060024L	6	24	164,789	152,789	16	59,3	55	60	120	80
1HG11L060025L	6	25	171,155	159,155	16	59,3	55	60	120	80
1HG11L060030L	6	30	202,986	190,986	16	59,3	55	60	120	80
1HG11L080020L	8	20	185,766	169,766	20	79,9	75	80	145	110
1HG11L100020L	10	20	232,207	212,207	22	90,4	85	100	165	125